



THE UNIVERSITY OF
SYDNEY

Matilda Centre

Learning with **FASD**



Learning with FASD: Evaluation of a research translation initiative on FASD for secondary school teaching and support staff

FASD 2026 Conference
18th – 21st April 2026



www.learningwithfasd.org.au



info@learningwithfasd.org.au



@LearningwFASD



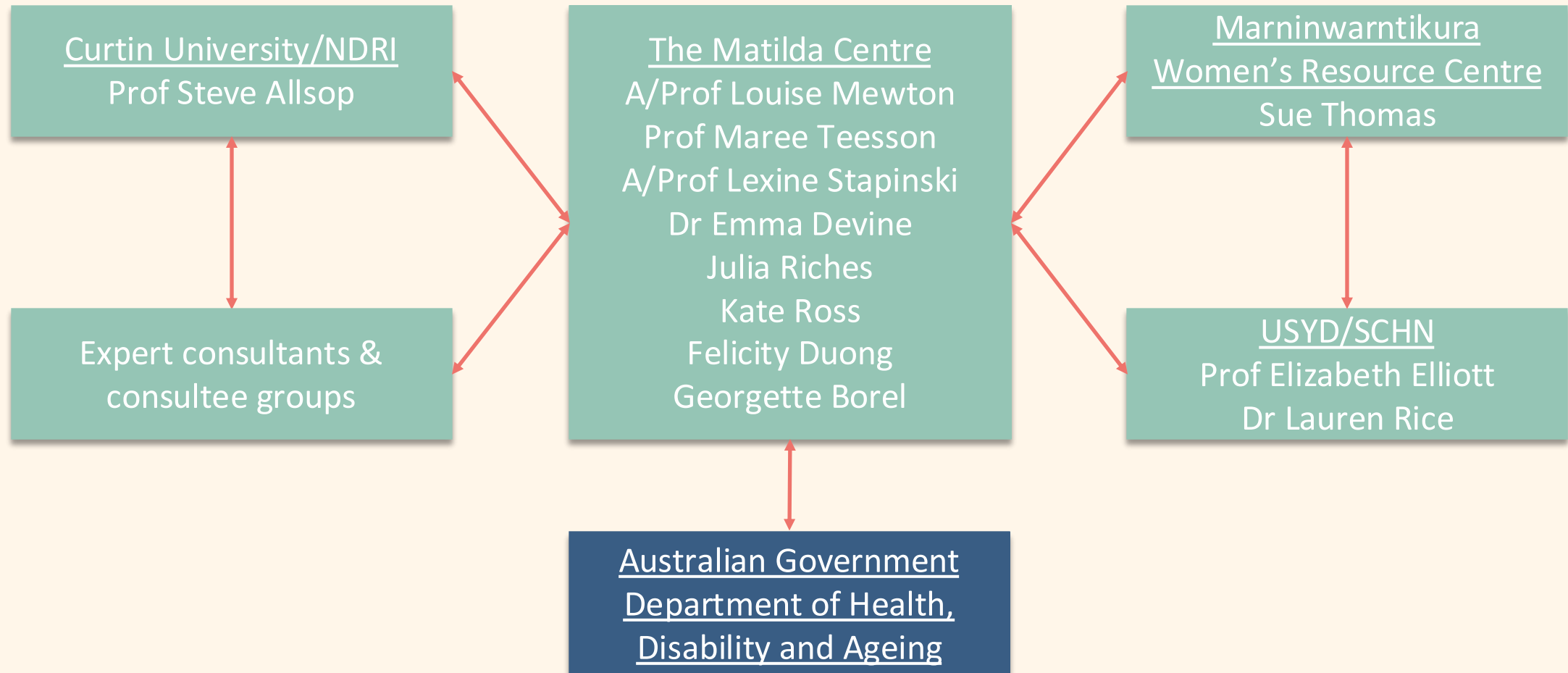
@LearningwithFASD

Acknowledgement of country

We acknowledge the Traditional Custodians of Country throughout Australia and recognise their continuing connection to land, water, and culture.

We pay our respects to those who have cared and continue to care for Country.

Research team & key stakeholders



- 50-70% of Australian women report drinking alcohol during pregnancy.
- More than 25% continue to drink after knowledge of pregnancy.
- 3.64% of children born in Australia today may be affected by FASD.

FASD affects one child in every classroom

FASD in adolescence

- Adolescence is a critical time for brain development.
- As expectations for independence, educational attainment and employment increase, adolescents with FASD may experience multiple challenges in functioning and struggle to meet aged based expectations.
- Common experiences that may be difficult for all young people (e.g., transitioning into secondary education, peer relationships, sexual identity) will be even more challenging for young people with FASD.

The role of educators

- Longitudinal studies show that young people with FASD who do not receive appropriate support have a higher risk of a disrupted education, mental health issues, contact with the justice system, and harmful substance use.
- Secondary school teaching and support staff can play a vital role in recognising neurodevelopmental concerns and providing educational support.
- School staff can connect adolescents and families to allied health and mental health services for assessment and support.

Learning with FASD

Learning with **F A S D** Primary School Resources Secondary School Resources Who We Are Additional Support

Trusted, evidence-based resources to help educators understand and support children with FASD in Australian schools.

Developed in collaboration with researchers, experts and educators across Australia.

What is FASD? Get the facts.

What is FASD?

A detailed explanation of Fetal Alcohol Spectrum Disorder, how it may impact children and adolescents, and key guidelines for educators working with students with FASD.

Get the facts

Accessibility icons: screen reader, keyboard, print, zoom

Learning with **F A S D** Primary School Resources Secondary School Resources Who We Are Additional Support

Secondary School Resources

FASD in adolescence

Substance use in adolescents with FASD

Social & emotional development

FASD & mental health

Transitions during adolescence

Managing challenging behaviours

FASD and trauma

FASD in adolescence

A short video that explains the impacts of Fetal Alcohol Spectrum Disorder during adolescence, and how this might affect a young person with FASD in the school environment.

Learn more

Accessibility icons: screen reader, keyboard, print, zoom

Learning with **F A S D** Primary School Resources Secondary School Resources Who We Are Additional Support

Primary School Resources

Understanding FASD

Classroom Strategies

Family Engagement

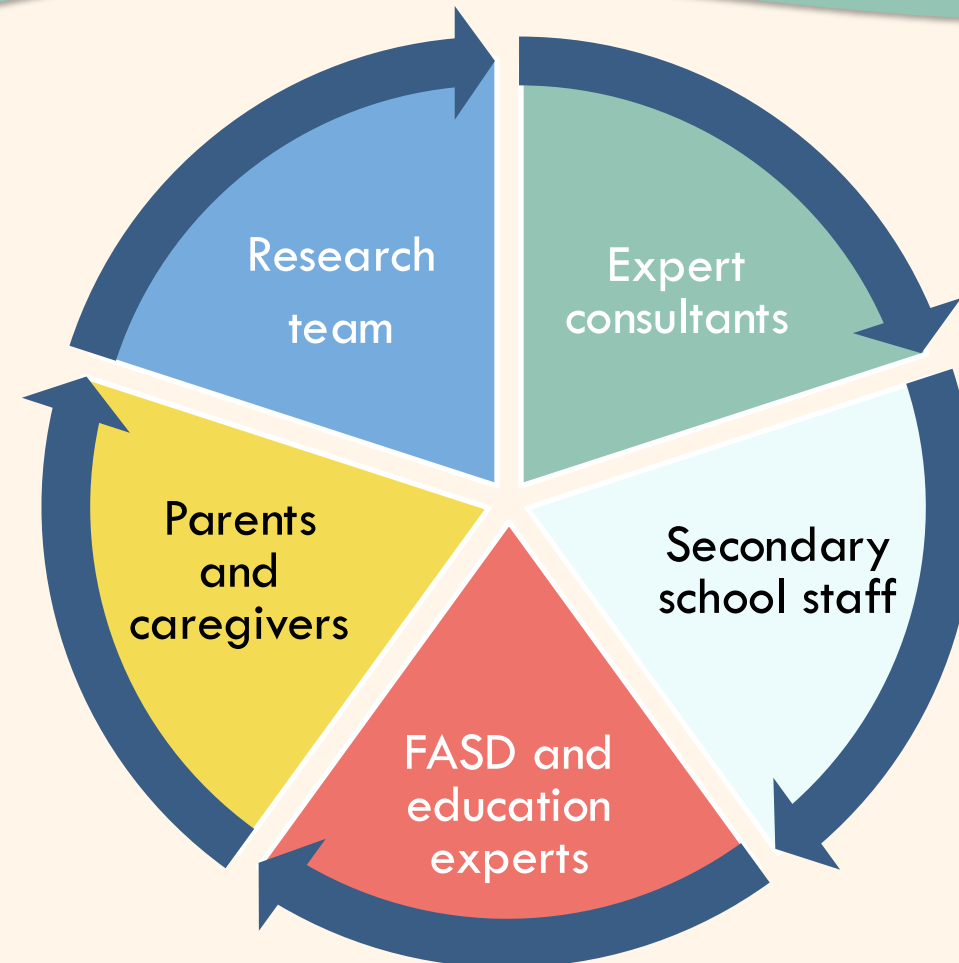
Understanding FASD

Disorder (FASD) is a term used to describe the impacts individuals who were prenatally exposed to alcohol. Resources designed to help primary teaching and support and skills to understand FASD and it's impacts on

Accessibility icons: screen reader, keyboard, print, zoom

Learning with FASD

- The resources and website were developed using a multi-stage review process.
- At each stage, refinements were made by the research team based on consultation feedback.

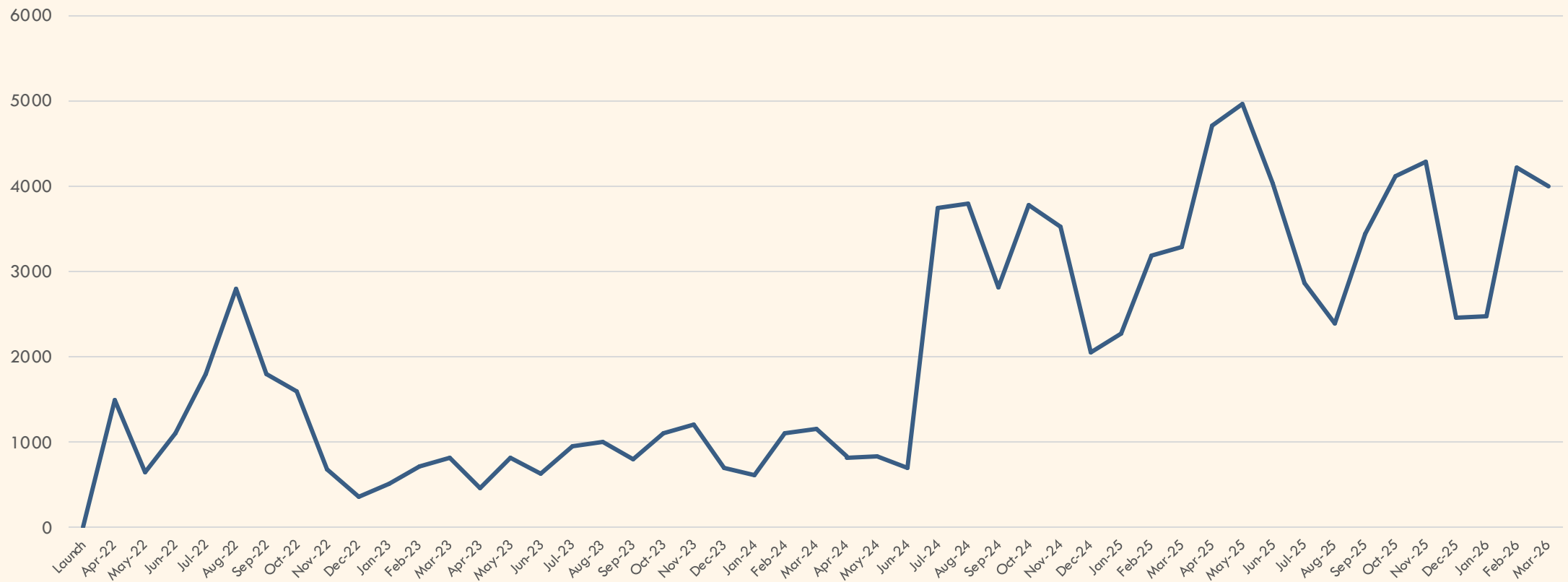


Our resources

Videos/Podcasts	Factsheets	Guides/Other
What is FASD?	Collaborating with parents & caregivers	The referral and diagnostic process
A day in the life of a child with FASD	Language and communication strategies	Understanding FASD in a school environment
Tips for engaging with parents & caregivers	Teaching and learning strategies	Quizzes
FASD in adolescence	Creating a successful learning environment	Externally developed resources
FASD and trauma	Supporting executive functioning	
Managing challenging behaviours	Substance use in adolescence	
	Social and emotional development	
	FASD and mental health	
	Transitions during adolescence	

Site utilisation

Monthly site users



Site utilisation

Site users

Total: 96,958

Most popular resources

1. What is FASD? (video)
2. Teaching and learning strategies (factsheet)
3. Creating a supportive learning environment (factsheet)

Users by country

Australia:	65%
USA:	11%
Canada:	9%

Page views

Total: 194,291

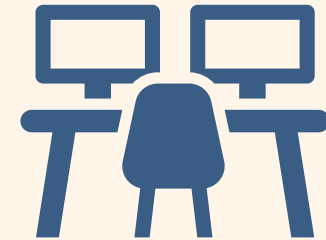
Top referring websites

1. Facebook
2. The FASD Hub
3. X/Twitter

**13,192 PDF
downloads**

**~11,000
returning users
(11%)**

Site evaluation: Secondary school



Woman or female	89 (79%)
Male or man	22 (20%)
Prefer not to say	1 (1%)

NSW	49
QLD	19
WA	12
VIC	22
NT	2
TAS	2
SA	5
ACT	1

Metro	65 (58%)
Regional	40 (36%)
Remote	7 (6%)

Teacher	79
Education assistant	7
School counsellor or psychologist	5
Principal	2
Youth Worker	2
School nurse	1
Other	15

Site evaluation: Follow-up



97 secondary school teaching and support staff took part in the follow-up survey three months after the baseline survey (**retention rate: 87%**).

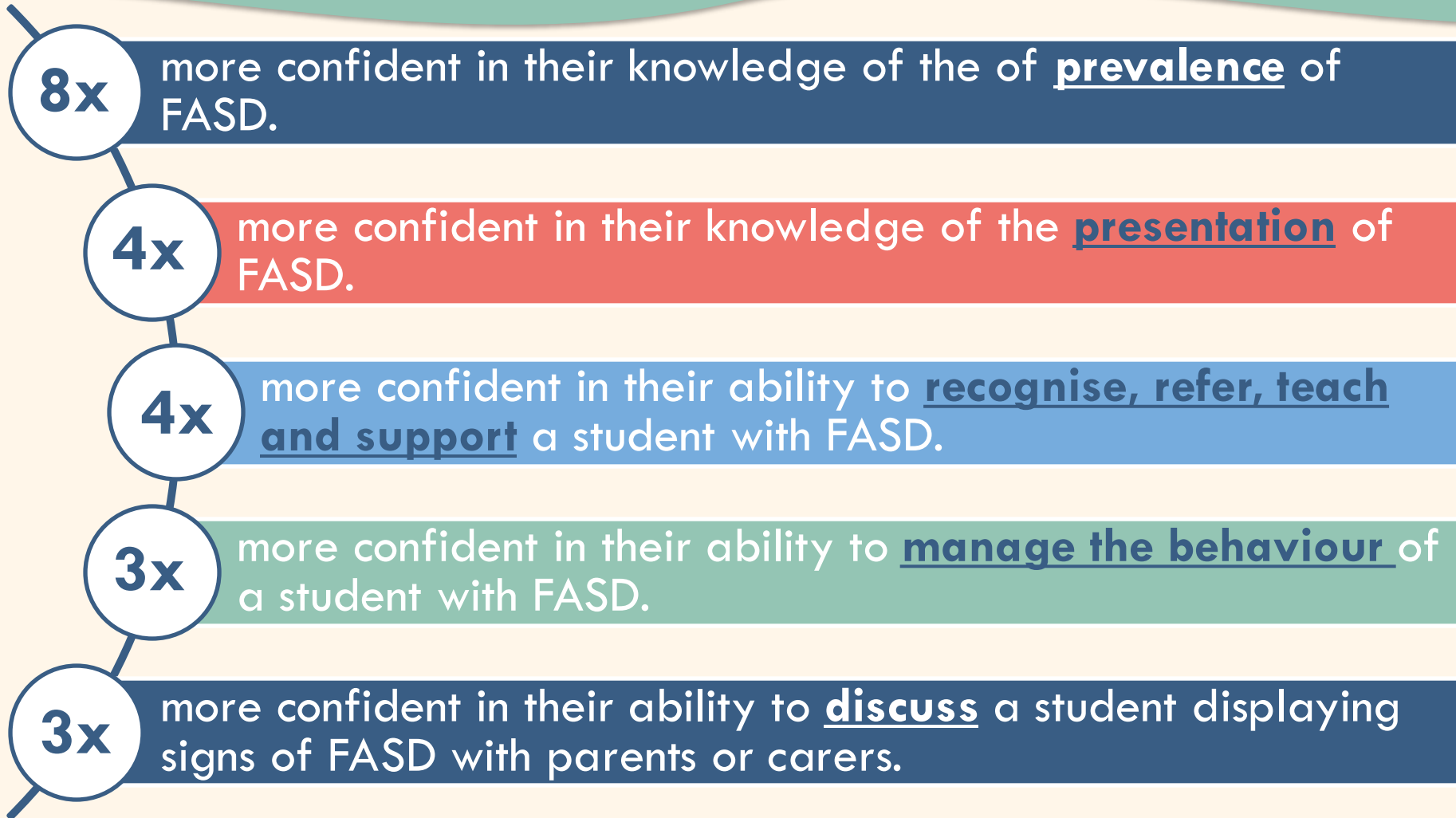


84% of participants '**agreed**' or '**strongly agreed**' they had a **positive experience** using the website.

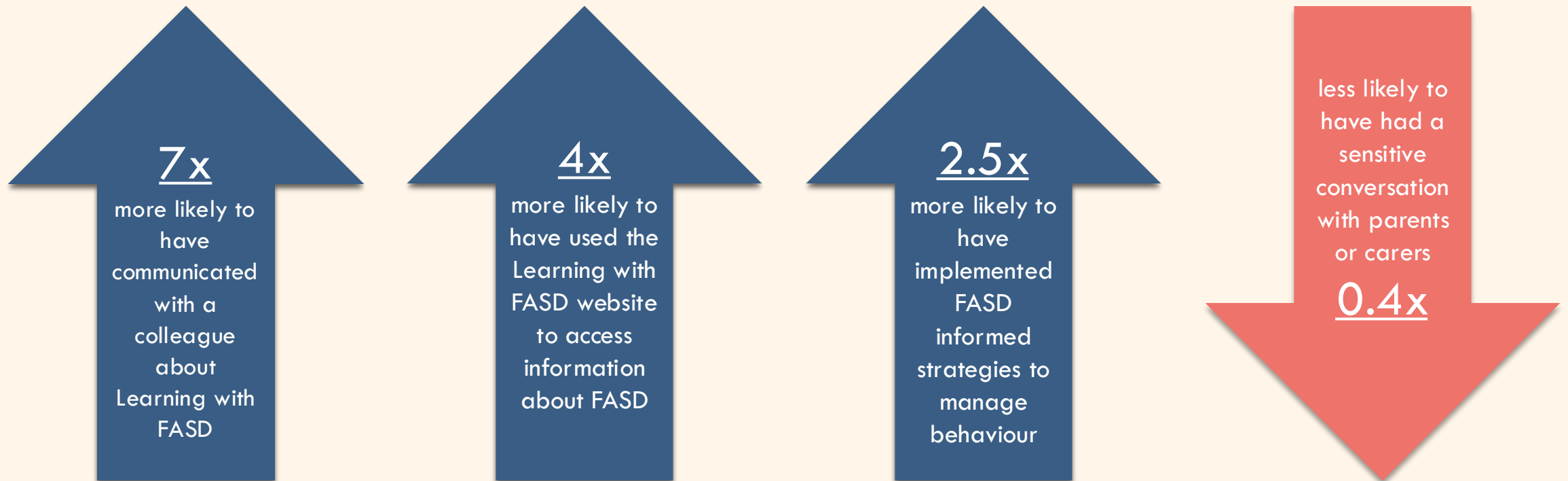


71% of participants '**agreed**' or '**strongly agreed**' the website and resources have **informed and influenced** their approach to teaching and supporting students with FASD.

Knowledge & confidence



Behaviour change



Key takeaways

- Secondary school staff showed significant **improvements in knowledge and confidence** pertaining to FASD from baseline to follow-up.
- Secondary school staff reported **increased engagement in behaviours** to better support students with FASD.
- **Learning with FASD** is an effective method of disseminating evidence-based resources on FASD. It is a useful tool to build capacity in educators to ensure children with FASD are supported in Australian schools.

Learning
with



Thank you!



www.learningwithfasd.org.au



info@learningwithfasd.org.au



@LearningwFASD



@LearningwithFASD