

Prevent Sexual Exploitation and Human Trafficking for Clients with FASD

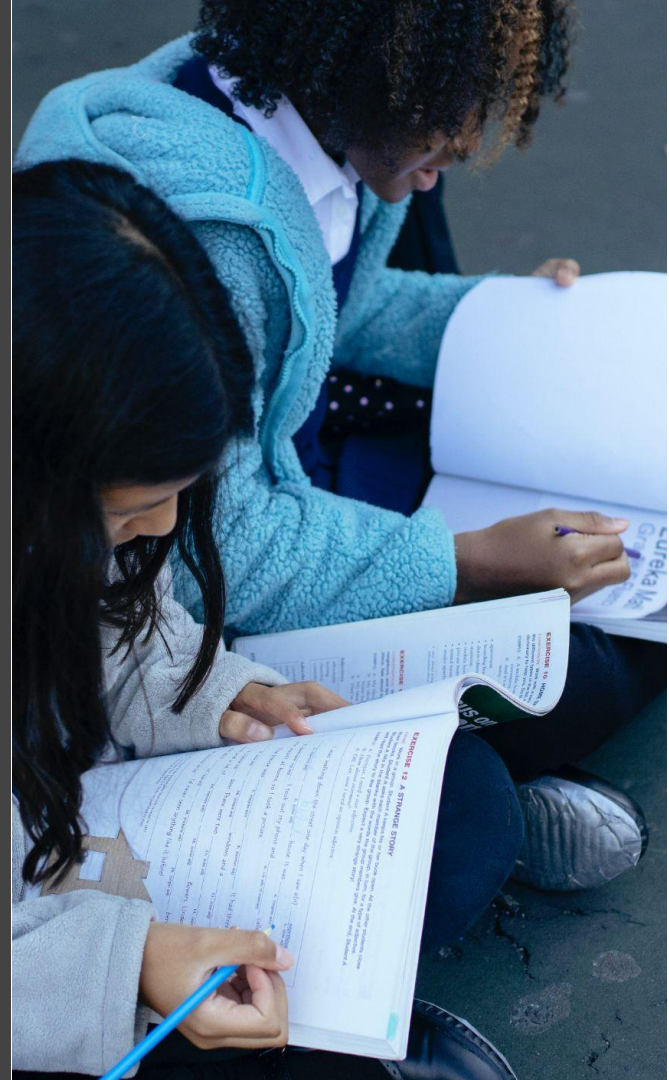
Tenisha Brown, MPH
*Prevention Program Training
Manager*

Kayla Brown-Kivi SW, RSW
*Social Worker - Inreach
Mentor*

LOVE146



Willow Winds
SUPPORT NETWORK



WILLOW WINDS

Willow Winds Support Network is an FASD and Brain Domain Challenge organization supporting Edmonton, Alberta, and western Canada; ElevateHer supports the Atlantic provinces.

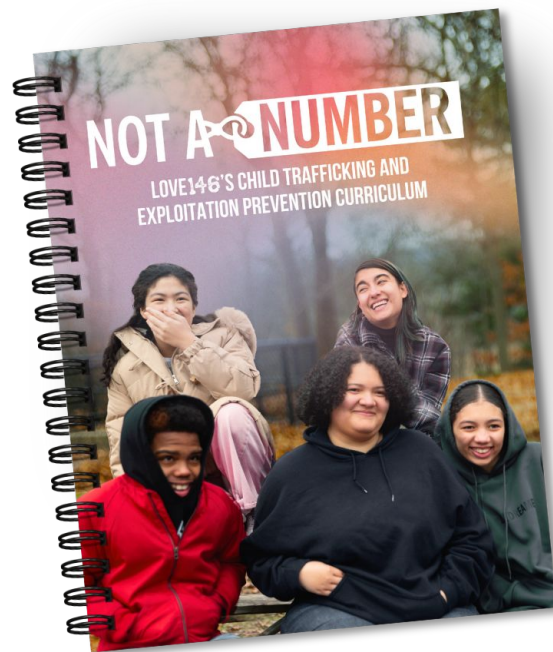
Love146 supports the prevention of sexual exploitation and human trafficking in the USA. Together they train facilitators to offer the prevention program Not a Number on Sexual Exploitation and Human Trafficking for vulnerable populations and connect organizations wanting the program with trained professionals to deliver it.



Willow Winds
SUPPORT NETWORK

LOVE146 & NOT A NUMBER

- Founded in 2002, Love146's mission is to journey alongside children impacted by trafficking today and prevent the trafficking of children tomorrow.
- Headquarters in CT, home to the Survivor Care Team
 - walks alongside survivors long-term - never closes out a case
- *Not A Number*: Is an interactive five-module child trafficking and exploitation prevention curriculum
 - Includes information to support a whole-school or entire-system response
 - Is designed for youth ages 12-18 in schools, child welfare and juvenile justice agencies, and other community settings
 - Of note, Love146 and external partners have also implemented *Not a Number* successfully with special populations, including youth and young adults (18-24) with specialized support needs.



PRESENTATION OVERVIEW

- FASD and Sex Trafficking Overview
- Vulnerabilities and Recruitment
- Supporting Individuals with FASD
- *Not a Number*
- Trauma Informed Approach

LOVE146



LEARNING OBJECTIVES

- Learn about the cross section between Sexual Exploitation and Human Trafficking in USA and Canada within the FASD sector.
- Learn about the Sexual Exploitation and Human Trafficking prevention program *Not a Number*.
- Learn how to make your organization or home a safe place with the skills necessary to assist your vulnerable clients/individuals impacted by FASD, Sexual Exploitation and Human Trafficking.

PREVENTION EDUCATION

With respect to human services, prevention typically consists of methods or activities that seek to reduce or deter specific or predictable problems, protect the current state of well-being, or **promote desired outcomes or behaviors.**

FETAL ALCOHOL SPECTRUM DISORDER (FASD)

- Fetal Alcohol Spectrum Disorder (FASD)
 - a diagnostic term used to describe impacts on the brain and body of individuals prenatally exposed to alcohol.
 - FASD is a lifelong , whole body disability. Individuals with FASD will experience some degree of challenges in their daily living, and need may support with motor skills, physical health, learning, memory, attention, communication, emotional regulation, and social skills to reach their full potential.



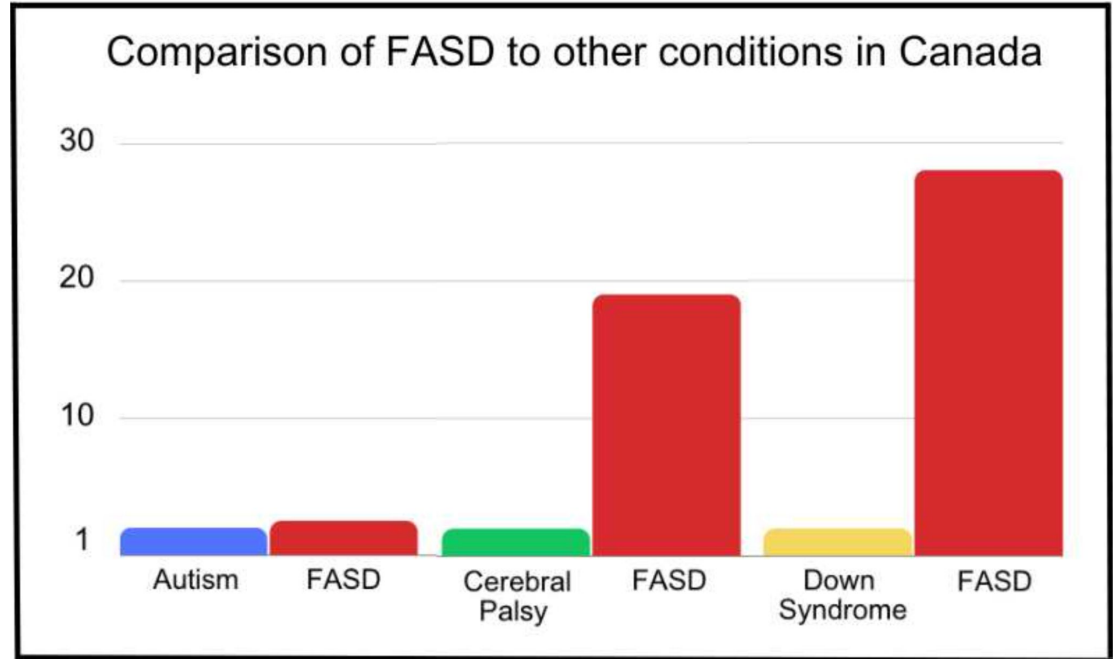
FASD

Canadian Stats

In Canada, it is estimated that for people born each year FASD is

- 2.5 times more common than Autism,
- 19 times more common than Cerebral Palsy; and
- 28 times more common than Down Syndrome.

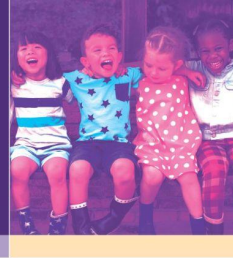
<https://fasdcanada.ca/>



FASD

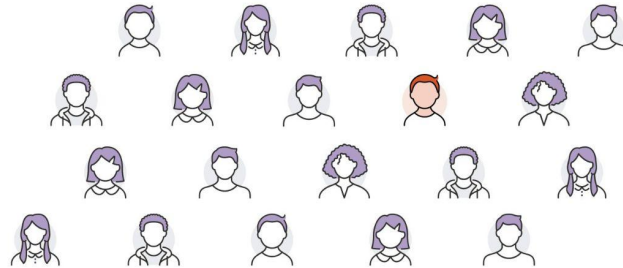
FETAL ALCOHOL SPECTRUM DISORDERS (FASDs)

ARE A GROUP OF DIAGNOSES THAT CAN OCCUR IN A PERSON WHO WAS EXPOSED TO ALCOHOL BEFORE BIRTH.



1 IN 20

Up to 1 in 20 U.S. school children may have FASDs.



MAY PA, CHAMBERS CD, KALBERG WQ, ET AL. PREVALENCE OF FETAL ALCOHOL SPECTRUM DISORDERS IN 4 US COMMUNITIES. JAMA. 2018;319(5):474-482. DOI:10.1001/JAMA.2017.21896

CS323487-A



Experts estimate that the full range of FASDs in the **United States** and some Western European countries might number as high as 1 to 5 per 100 school-aged children (or 1% to 5% of the population)



THE IMPACT OF FASD

- Disruptive/High risk behaviors
- Hypersexualization
- Impulsivity/Aggression
- Hypervigilance
- Dissociation
- Difficulty processing information
- Lack of attention and awareness
- Difficulty developing trust and forming healthy relationships



Prevalence of Adverse Outcomes

	Ages 6-11	Ages 12-20	Age 21+
Mental Health Challenges	93%	29%	46%
Disrupted school experience	14%	61%	61%
Involvement with the law	14%	60%	60%
Sexually inappropriate behaviour	39%	48%	52%
Employment difficulties	N/A	N/A	83%
Dependent Living	N/A	N/A	79%

Adverse Outcomes

Adverse outcomes are the negative life experiences that can result when an individual with FASD does not receive adequate supports.



TRAFFICKING VICTIMS PROTECTION ACT

The recruitment, harboring, transportation, provision, obtaining, patronizing, or soliciting of a person for

SEX TRAFFICKING


...a **commercial sex** act, in which the act is induced by force, fraud or coercion, or in which the person induced to perform such an act has not attained 18 years of age.

LABOR TRAFFICKING

...labor or services, through the use of force, fraud or coercion for the purpose of subjection to involuntary servitude, peonage, debt bondage, or slavery.

SEX TRAFFICKING

- Commercial Sex
 - A transaction for any kind of sexual act or activity in exchange for anything of value whether it be money, goods, a place to stay, drugs, favors, etc.
- Survival Sex
 - The exchange of sexual acts (commercial sex) to meet basic needs

 *For individuals under the age of 18, survival sex does not involve the overt force, fraud or coercion of a trafficker, but rather it is where an individual felt that their circumstances left little or no other option. This would still constitute human trafficking*

FASD VULNERABILITIES

Cognitive & Executive Functioning Challenges

- Difficulty with memory, especially short-term memory
- Trouble understanding cause-and-effect (“if I do this, then that will happen”)
- Impulsivity and difficulty thinking ahead
- Challenges with planning, organizing, and decision-making

Communication & Social Understanding

- May appear verbally capable but struggle with deeper comprehension
- Difficulty reading social cues or recognizing unsafe situations
- Tendency to be trusting or overly friendly with strangers



VULNERABILITIES AND RECRUITMENT

Adaptive Functioning Gaps

- Struggles with daily living skills (money management, transportation, time management)
- May appear “older” than they function developmentally

Judgment & Suggestibility

- Higher likelihood of going along with others to fit in or avoid conflict
- May say “yes” without fully understanding what they’re agreeing to
- Can be easily influenced by authority figures or peers

History of Trauma & System Involvement

- Involvement in foster care, juvenile justice, or mental health systems
- Histories of trauma, neglect, or instability

RECRUITMENT

Who Are the Exploiters/Traffickers?

- Romantic partner
- Job Recruiter
- Employer
- Family member
- Peer
- Gang
- Online predator



RISK FACTORS

SOCIETY

Strong Perceptions
Materialistic Society
Laws and Policies
Sexualizing Youth
Social Norms
Media

Lack of Social Supports
High Level of Transience
Limited Employment
Opportunities
High Levels of Incarceration
High Levels of Family
Disruption
Gangs
System Involved

COMMUNITY

RELATIONAL

Socioeconomic Status
History of Trauma
Mental Illness
Low Self-Esteem
Personal Substance Abuse
Specialized Support Needs

Low Emotional Attachment to
Caregivers
Separated/Divorced Parents
Dating Violence
Incarcerated/Deceased Family
Member
Low Parental Involvement
Family Substance Use/Abuse
Bullying
Peers in "the life"
Domestic Violence in the
Home

INDIVIDUAL

8 Magic Keys to Support Clients with FASD

8 MAGIC KEYS FASD

CONCRETE

CONSISTENCY

SPECIFIC

REPETITION

ROUTINE

SIMPLICITY

STRUCTURE

SUPERVISION




Why *Not a Number* is an Effective Tool

LOVE146



NOT A NUMBER



Provide youth with information and skills in a manner that inspires them to make safe choices when they encounter potentially exploitative situations and utilize healthy support systems that may decrease their vulnerabilities.

1

CONCRETE

Magic Key: Use literal, clear language

NAN Connection: Lessons break down complex topics (like trafficking, consent, grooming) into clear, real-life scenarios and examples

NAN avoids abstract concepts by showing what situations actually look like in real life

NOT A NUMBER
SAM'S STORY

Sam doesn't feel like he fits in at school. He's short, skinny, and not very athletic. His dad isn't around much, but when he is, he makes sure that Sam, his mom, and his siblings know who is in charge. There's always yelling, because according to his dad, they never do anything right. When Sam told his parents he was being bullied at school, his dad just laughed and told him to "man up!" Sam feels completely alone.

It's always been easier for Sam to talk to people online, and he started spending more and more time on the computer. A few months ago, he met Jackie while playing Call of Duty. Jackie suggested they start talking through Snapchat, and Sam started to share a lot more information with her.

Last week, Sam told Jackie about two boys from school who said he wasn't "man enough" to be on their team in gym class. Jackie told him she didn't believe that, and asked him to send a picture without his shirt on. Sam felt uncomfortable, but thought they were friends. Now, Jackie is blackmailing Sam and has threatened to make up embarrassing stories and share the photos online unless he sends full nude pictures and agrees to meet her after school next week.

WHAT PART OF SAM'S STORY DID THE EXPLOITER TAKE ADVANTAGE OF?	WHO COULD HAVE DONE SOMETHING TO CHANGE HOW THE STORY ENDED?	HOW DID THE EXPLOITER TAKE ADVANTAGE OF SAM AND ULTIMATELY EXPLOIT HIM?	LIST THE NEGATIVE EFFECTS SAM MAY BE EXPERIENCING.

Attachment F-K



2

CONSISTENCY

Magic Key: Keep responses and expectations predictable

NAN Connection: Curriculum is delivered in a structured, standardized format across sessions

Same language, same safety messages, repeated throughout the curriculum

3

SPECIFIC

Magic Key: Be explicit and clear

NAN Connection: Teaches specific, actionable skills, like:

“What to say”

“How to exit a situation”

“Who to go to for help”

Strengthening protective factors
(trusted adults, confidence,
awareness)

Not just awareness—
clear behaviors youth can use

NOT A NUMBER

WHAT WOULD YOU DO?

<p>PERSONAL SCENARIO: Write a difficult situation that you and your peers might go through. Think of situations where you might be at risk for emotional or physical harm.</p>	<p>SAFETY PLAN: Prepare a plan for how you would stay safe in the scenario that you created on the left. What practical steps can you think about to prepare for that situation? Be specific.</p> <ol style="list-style-type: none">1. _____2. _____3. _____ <p>What are two resources that could help you during the situation? Use your resource guide.</p> <ol style="list-style-type: none">1. _____2. _____
-------------------------------------------------------------------------------------------------------------------------------------------------------------------------------------------	-------------------------------------------------------------------------------------------------------------------------------------------------------------------------------------------------------------------------------------------------------------------------------------------------------------------------------------------------------------------------------------------------------------------------------------------------------------------------------------------

4

REPITION

Magic Key: Teach skills over and over

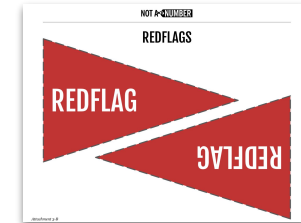
NAN Connection: Comprehensive reviews, Core concepts like:

- Trusted adults
- Red flags
- Exit strategies

PART 1: WELCOME BACK & REVIEW
4 Minutes

STEP 1: Welcome participants to the session and review the activities completed in the previous session by asking them what they remember learning. Where appropriate, ask follow-up questions to take the discussion deeper.

Ask the following questions to review Module 1:



...are revisited in multiple lessons and activities

This reinforces learning for youth who need repetition (including those with FASD)

5

ROUTINE

Magic Key: Predictable structure reduces anxiety

NAN Connection: Each session follows a similar flow:

- Opening- welcome back & review
- Activity
- Discussion
- Reflection - wrap up & index cards

Youth know what to expect, which increases engagement and retention



6

SIMPLICITY

Magic Key: Break things into manageable steps

NAN Connection: Complex topics are chunked into small, teachable pieces

Instead of overwhelming youth, *NAN* builds knowledge step-by-step; comprehensive modules, provides sufficient dosage

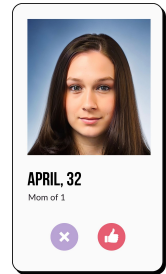
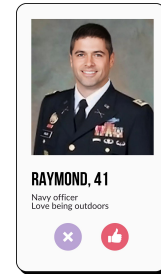
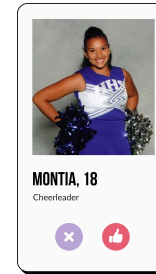
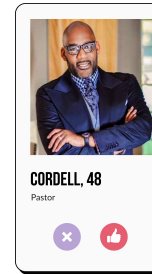


STRUCTURE

Magic Key: Provide external supports

NAN Connection: Uses:

- Visuals
- Role plays
- Guided discussions
- Facilitator-led activities



These supports help youth process and apply information

SUPERVISION

Magic Key: Adjust support to developmental level

NAN Connection: Emphasizes:

- Safe adults
- Ongoing guidance
- Adult involvement in reinforcing skills

Recognizes youth need continued support, not just one-time education, entire system response, reducing risky behavior and getting help



Don't have time for all this? **CALL 211** It's free and confidential. We'll help you find the right resources.

SAFE SPACES AND SHELTERS

HOURLINES

FOR MILWAUKEE

a guide to LOCAL HELP for youth

FOR MILWAUKEE

EXPLOITATION ...a quick refresh of THE BASICS

SEXUAL TRACKING

RAPE

COMMERCIAL SEXUAL EXPLOITATION OF CHILDREN

SEXUAL ASSAULT

SAFETY PLANNING

SUBSTANCE ABUSE

HEALTH

DATING AND SEXUAL VIOLENCE

TRAFFICKED AND EXPLOITED YOUTH

MY SAFE PEOPLE

A FRIEND I CAN TALK TO:

AN ADULT I CAN TALK TO:



TAKING A TRAUMA-INFORMED APPROACH

DO

- Create a safe space
- Watch your language
- Label behavior, not youth
- Discuss healthy and unhealthy relationships
- Discuss consent
- Watch for signs of trauma

DON'T

- Dispute facts
- Question motives
- React with disgust or shock
- Expect full disclosure
- Expect youth to recognize victim status

FACILITATOR CERTIFICATION TRAINING



- Training on Human Trafficking
- Modeling of *Not a Number* modules
- Coaching on facilitation techniques with diverse settings
- Skill building activities for active listening and appropriate response to disclosures
- *Not a Number* participant teachback practice

QUESTIONS ?

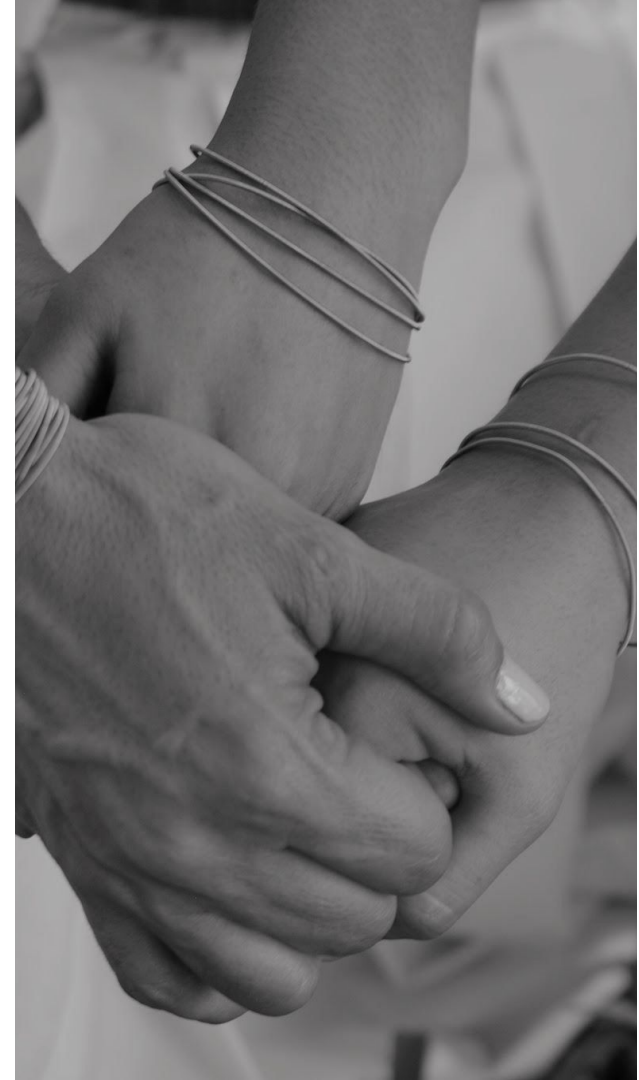
Contact Us

Tenisha Brown

✉ tenisha@love146.org


✉ notanumber@love146.org

LOVE146



Kayla Brown-Kivi

 Kaylabk@wwsn.ca

 (780)-203-7667



Remember:

Fetal Alcohol Spectrum Disorder is permanent brain damage.

It cannot be fixed or undone.

It can be supported.

Northwest Central
FASD Network
Angela Kemble
angelak@nwcfasd.ca



Willow Winds
SUPPORT NETWORK

